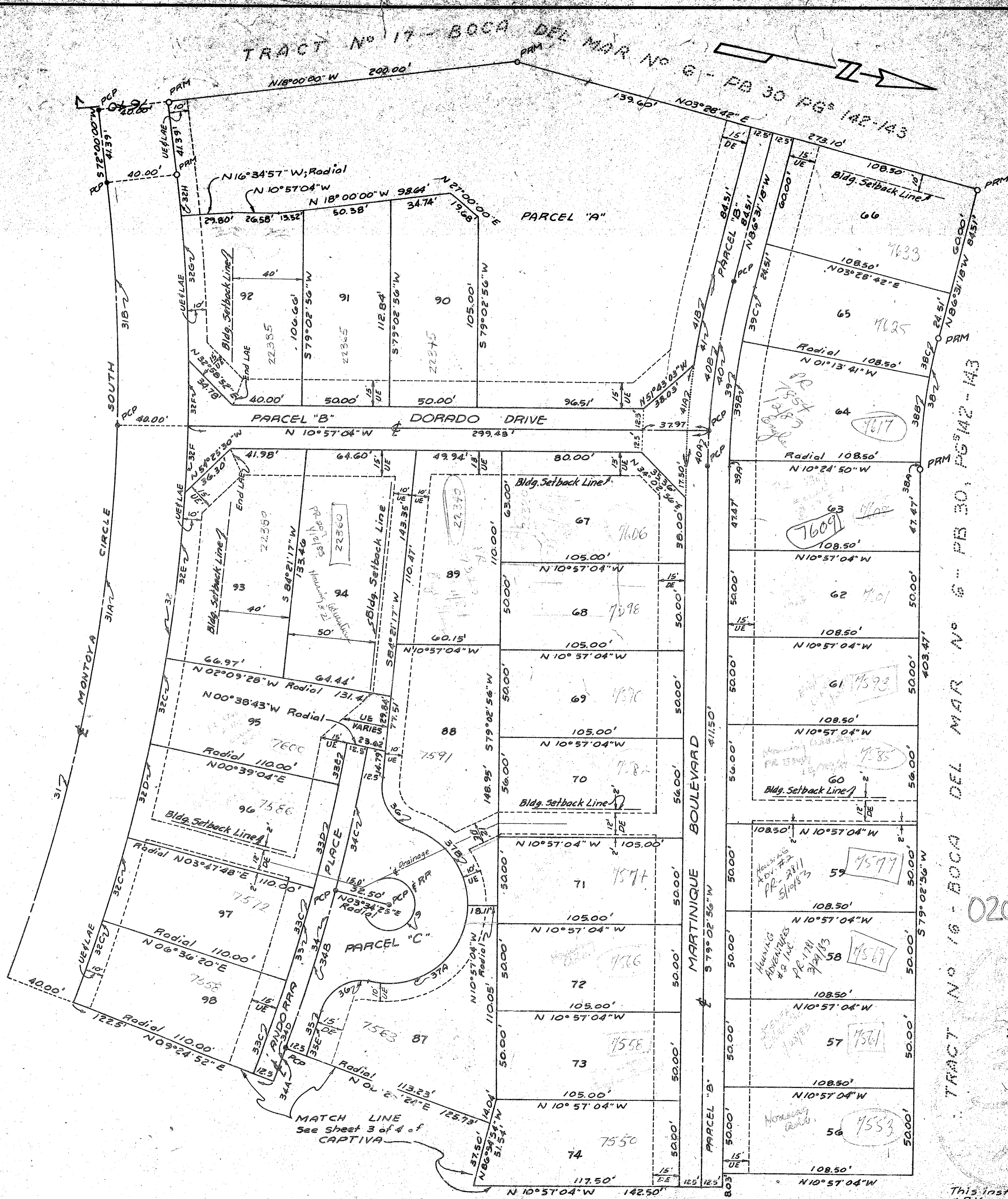


CURVE DATA				
No	Delta	Radius	Tangent	Chord
9	360°00'00"	1500	—	94.25
31	34°30'00"	954.93	296.51'	575.00'
31A	26°26'04"	"	—	440.51'
31B	08°03'56"	954.93	—	134.43'
32	34°30'00"	994.93	308.93'	599.09'
32C	02°48'32"	"	—	48.78'
32D	03°08'44"	"	—	54.62'
32E	05°39'29"	"	—	98.25'
32F	02°09'34"	"	—	37.50'
32G	04°26'52"	"	—	77.23'
32H	01°25'03"	994.93	—	24.61'
33	17°08'43"	1104.93	166.57'	330.64'
33C	02°48'32"	"	—	54.17'
33D	03°08'44"	1104.93	—	60.66'
34	17°08'43"	1117.43	168.45'	334.38'
34A	08°05'36"	"	—	157.84'
34B	04°49'59"	"	—	94.26'
34C	04°13'08"	"	—	82.28'
34D	01°00'28"	1117.43	—	19.65'
35	09°27'16"	1129.93	101.71'	202.95'
35E	01°21'40"	1129.93	—	26.84'
36	84°10'11"	25.00'	—	38.46'
37A	102°09'59"	45.00'	—	80.24'
37B	73°07'01"	45.00'	—	57.43'
38	14°25'46"	300.00'	37.98'	75.55'
38A	00°32'14"	"	—	2.81'
38B	08°11'09"	"	—	48.10'
38C	04°42'23"	300.00'	—	24.64'
39	14°25'46"	408.50'	51.71'	102.88'
39A	00°32'14"	"	—	3.83'
39B	09°11'09"	"	—	65.49'
39C	04°42'23"	408.50'	—	33.56'
40	14°25'46"	421.00'	53.29'	106.03'
40A	02°43'22"	"	—	20.01'
40B	11°42'24"	421.00'	—	86.02'
41	14°25'46"	433.50'	54.58'	109.17'
41A	07°35'59"	"	—	57.50'
41B	06°49'47"	433.50'	—	51.64'
33E	01°17'47"	1104.93	—	25.00'

NOTES

- Bearings based on N79°02'56"E along the North Line of Tract 17, Boca Del Mar No. 6, as shown on the plat recorded in Plat Book 30, Pages 142-143 of the Public Records of Palm Beach County, Florida.
- Parcel A is for a Recreational Area.
- Parcels B & C are for Parking Tracts.
- Parcels B, C, D, G, H & I are to be utilized for Drainage Easements and Utility Easements.
- Parcel D is for Private Street Right-of-Way.
- Parcels G, H & I are for Pedestrian Way and Bike Path.
- Parcels E & F are for Landscape Areas and Entrance Signs.
- O indicates Permanent Reference Monuments (PRM).
- indicates Permanent Control Points (PCP).
- POB indicates POINT OF BEGINNING.
- DE indicates Drainage Easement.
- UE indicates Utility Easement.
- LAE indicates Limited Access Easement.
- RP indicates Radial Point.
- Buildings, trees or shrubs are not permitted in drainage or utility easements.



# CAPTIVA

A PLANNED UNIT DEVELOPMENT

A PORTION OF SECTION 28, TOWNSHIP 47 SOUTH, RANGE 42 EAST, PALM BEACH COUNTY, FLORIDA, BEING A REPLAT OF A PORTION OF TRACT NO. 17 OF BOCA DEL MAR, PLAT NO. 6 AS RECORDED IN PLAT BOOK 30, PAGES 142-143 OF THE PALM BEACH COUNTY PUBLIC RECORDS. WALTER A. CORNNELL, INC. CONSULTING ENGINEERS & LAND SURVEYORS. BOCA RATON, FLORIDA. AUGUST 1979. SHEET 2 OF 4.

0205-336